



49 Moringol Place Royalla NSW

4 2 4

As you approach 49 Moringol Place Royalla you will be immediately impressed by how comfortably the home sits within its private surrounds. Perfectly positioned amongst mature trees and established gardens on ten acres (approx.) of rolling countryside.

The home is set on one level with a free-flowing open plan design and light-filled living areas. These areas make the most of the ideal northerly aspect and commanding views. The heart of the home is the country kitchen with quality Smeg oven and gas cook top. There is a Bosch dishwasher and a large walk-in pantry with loads of storage.

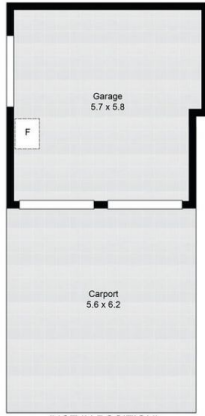
The functionality of the home is assured with 4 bedrooms,

[For full version visit the website](https://www.rapportproperty.com.au)

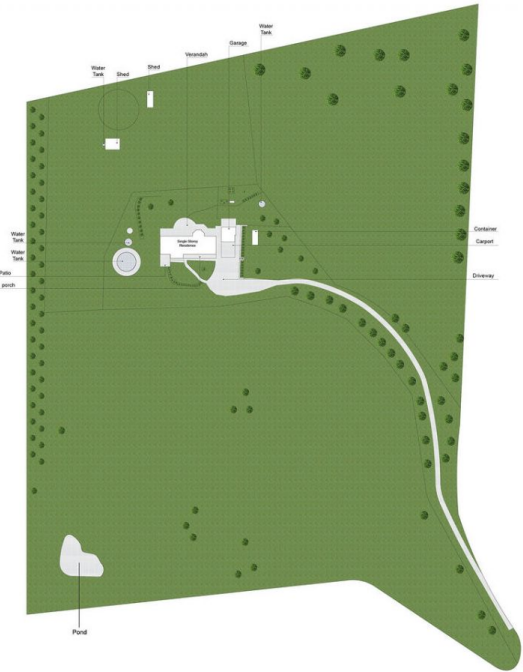
Type : House
Land Size : 4.01 ha
View : <https://www.rapportproperty.com.au/sale/nsw/capital-monaro-snowy/royalla/residential/house/8514384>



Marc Donohue
0417 646 417



(NOT IN POSITION)



Whilst every attempt has been made to ensure the accuracy of the floor plan contained here, measurements of doors, windows, rooms and any other items are approximate and no responsibility is taken for error, omission or mis-statement. This plan is for illustrative purposes only and should only be used as such by any prospective purchaser.